



PREMIUM KNIT SUPPORT, ANKLE WITH FIGURE-8 STRAPS

INSTRUCTIONS FOR USE

Single Patient Use Only

BEFORE USING THIS DEVICE, PLEASE READ THE FOLLOWING INSTRUCTIONS COMPLETELY AND CAREFULLY. CORRECT APPLICATION IS VITAL TO THE PROPER FUNCTIONING OF THE DEVICE.

INTENDED USE:

- Post-acute injury
- Chronic ankle sprain
- Joint hyper- mobility
- Ligament weakness

WARNINGS & PRECAUTIONS:

If you experience any pain, swelling, sensation changes, or any unusual reactions while using this product, consult your medical professional immediately.

- Never wear product over an open wound.
- Do not sleep in this product.
- Do not use cream or lotions under this product.

CLEANING INSTRUCTIONS:

1. Clean material in warm water using mild soap.
 - a. Do NOT use soap with lotion.
 - b. Rinse thoroughly.
 - c. If not rinsed thoroughly, residual soap may cause irritation and affect the life of the product.
2. Lay flat and air dry ONLY.

WARRANTY:

Manufacturer guarantees all products to be free from defects in materials and workmanship for a period of 6 months from date of purchase.

PART NUMBER: 900261-XX; 900262-XX.

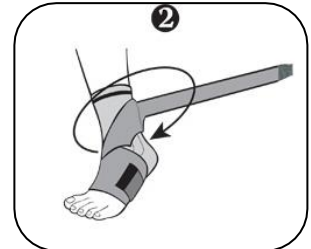
-XX	Size	Circumference 1" above malleolus
-01	XS	6.75" - 7.50"
-03	SM	7.50" - 8.25"
-05	MD	8.25" - 9.00"
-07	LG	9.00" - 9.75"
-08	XL	9.75" - 10.50"
-09	2XL	10.50" - 11.25"

APPLICATION INSTRUCTIONS:

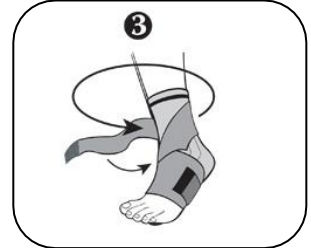
1. Pull the strap from the inside of your foot down to under arch.



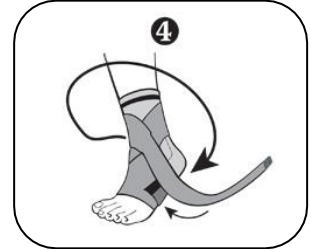
2. Bring strap diagonally across the top of your foot.



3. Wrap the strap around your ankle and above your heel.



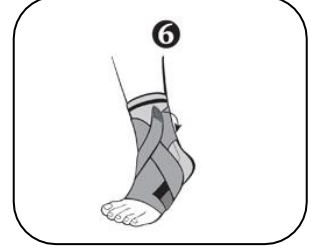
4. Bring strap diagonally toward the front of your foot over the top.



5. Bring the strap under arch for a second time.



6. Again, bring strap across top of foot and secure with Velcro® closure.



To remove support:

- Remove straps and roll top of support down.
- Pull at bottom of brace and remove.



EUROPEAN REPRESENTATIVE:



United Ortho Enterprises

2235 Pennsylvania St. Fort Wayne, IN 46803

Phone: 800-227-8748; Fax: 877-688-7975

www.United-Ortho.com